

Celebrating our 21st year of community service...

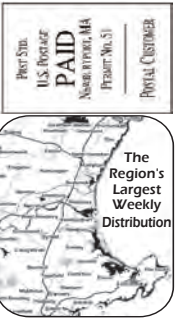
The Town Common

LARGEST DISTRIBUTION ACROSS THE NORTH SHORE OF MA & COASTAL NH

www.thetowncommon.com

Wednesday, August 20, 2025 - Vol. 21, No. 43

FREE



Walt Pomerleau striped shirt to left of Jessica Garron (center), with her parents Tammy and Ron Garron, surrounded by Rowley Supporters (Photo: Lonnie Brennan)

STORY PAGE 4

Rowley Veterans Committee Thanks Jessica Garron for Spearheading U.S. Flag Retirement Box

Georgetown Sand Mining Halted by Court

By Stewart Lytle, Sr. Reporter

LAWRENCE – After months of intensive sand mining at the Zibell Farm with large trucks, bulldozers and other noisy equipment disrupting a quiet Georgetown neighborhood, the town last week won an emergency freeze on the operations.

Superior Court Judge John Frazer, before he left this week for vacation, allowed the Georgetown SelectBoard's emergency petition against Robles Excavating Co., Todd Champlain, and Mary Potter to stop the sand mining operation at the 100-year-old farm.

"Until further order of the Court, the Defendants are prohibited from conducting any earth removal, excavation or importation at 214 North Street, Georgetown, MA, without the permission of the Plaintiff," the order read.

KP Attorney Roger Smerage also asked for a preliminary injunction on the mining operation, but the judge did not grant that petition.

Fraser encouraged Robles and the farm owners to renew the permit application process with the town and wrote that he would expect any action by the town, including conditions placed on the

Continued on page 2

Newburyport: Essex Ensemble to Play to Raise Funds for Newbury Food Bank

By Ava Moeckel, Reporter

NEWBURYPORT — The Essex Ensemble will perform at the Maudslay Arts Center on Saturday, Sept. 6, from 4 to 6 p.m. to raise money for the First Parish Newbury Food Pantry.

The group is directed by local resident, acclaimed musician and pantry volunteer Andrew Price and includes musicians from several Boston orchestras.

The First Parish Newbury Food Pantry serves more than 800 people each week in Newbury, Newburyport, Byfield, West Newbury, Salisbury, Rowley, Ipswich, and Georgetown. It is the largest all-volunteer food pantry in the area.

Reserved table seats for the concert are \$50 per person, and lawn tickets are \$30. Children under 12 are free. Doors open at 3:30 p.m. Limited parking is available at the arts center for vehicles with hand-icapped stickers. All others should park in

the main Maudslay State Park lot.

Tickets are available at www.newburyfoodpantry.org/events or at <https://FoodPantry-Concert.eventbrite.com>.

In other pantry news, Newburyport Boy Scout Troop members handed out 50 emergency kits to guests during food pickup on Aug. 1. Kits included water, a flashlight, soap, candles, matches and other supplies.

Being the growing season, the pantry saw an increase in the number of bags of fresh vegetables distributed in July, averaging 1,351 bags per week compared to 1,294 in June. ♦

Groveland's Tracy Gilford Named Grand Marshal for 175th Celebration Parade

Submitted by Annie Schindler
Executive Coordinator, Town of Groveland

GROVELAND – The Groveland Select Board is proud to announce that longtime resident and dedicated community volunteer, Tracy Gilford, has been named Grand Marshal for Groveland's 175th Celebration Parade.

Tracy Gilford has been an integral part of the Groveland community for many years. In addition to serving as an on-call firefighter, he has generously volunteered his time on town boards and committees, and at countless community events. Beyond his public service, Tracy has been the unofficial chronicler of Groveland, capturing the spirit of the town through his photography at nearly every local gathering and milestone.

In recognition of his outstanding contributions,



Tracy Gilford

Help
Wanted
Page 11

SIGNS BY DOUG
L.E.D. SIGNS
AWNINGS • BANNERS
CARVED SIGNS
BOAT/TRUCK LETTERING
(978) 463-2222

We Love to Print [Your Photos](#)

The Town Common

Advertising
advertise@thetowncommon.com
(978) 255-3015
www.thetowncommon.com

Copy/Ad Deadlines
5 P.M. each Thursday
Call us with any last-minute requirements! (978) 255-3015

Publisher/Editor
Lonnie Brennan
Lonnie@thetowncommon.com



The Town Common serves the communities of the Upper North Shore of Mass. & Coastal New Hampshire and welcomes your participation.



Marc Maravalli, B.S., R.Ph.
Founder/Publisher/Editor 2004 - 2024

How to Submit Letters to the Editor

Letters to the Editor provide a useful way of communicating concerns, issues, or suggestions to all members of the community. The Town Common encourages all citizens to submit short letters concerning issues of interest and concern to the local community.

Letters selected for publication may be edited for length and clarity. Some letters may serve as a catalyst for other articles or coverage, and community leaders and agencies will be offered an opportunity to respond to letters concerning their areas of responsibility. All letters must be signed and include a daytime telephone number. Send your Organization or Group Notices, Birth or Engagement Announcements, Photos, Articles and Letters to the Editor.
The Town Common
9 Hamilton Terrace
Georgetown, MA 01833
or preferably via e-mail to:
editor@thetowncommon.com

In loving memory of
Liz Ichizawa, '04-05 Reporter (1956 - 2005)
Jim Wilson, '20-22 Publisher/Editor (1954-2022)

The Town Common is not responsible for typographical errors or omissions, but reprint opportunities do exist for prompt notification of such errors. Advertisers should notify The Town Common of any errors in ads on the first day of issuance. No credits &/or refunds are offered or implied. All material and content cannot be duplicated without written consent of the publisher. The right is reserved to reject, omit, or edit any copy offered for publication.
Copyright 2004-2025 The Town Common® Broadside Communications - All Rights Reserved

GEORGETOWN SAND
Continued from page 1
Robles, which has been excavating sand at the farm for months before the town acted, has removed almost 29,000 cubic yards on a 5-acre section of the 30-acre farm, according to Champlain. Giant removal equipment has excavated as far down as 19 feet to determine where the water table. Most of the excavation is reported to reach a 13-foot depth.

The purpose, besides selling the valuable sand, was to bring in high quality soil capable of supporting an organic farm, Champlain told the planning board.

organic tick & mosquito control

978.380.3257

Call today!

Now scheduling summer services — scan for a quote!

24 HR. SERVICE

HEATING & COOLING

Furnaces • Boilers • Gas • Oil • HVAC

Service & Installation

978-346-4216

DavidHeating.com

Merrimac, MA

BROWN'S Seabrook Lobster Pound

"A New England Favorite Since 1950"

Boiled Lobster * Steamed Clams
Fried & Baked Seafood * Sandwiches

Open Every Day from
Apr 1st - Nov 15th
Open Fri, Sat, Sun & Holidays
Nov 15th - Apr 1st

Route 286, Seabrook Beach, NH
603-474-3331

Call Ahead
Take Out

TIDE CHART

JAY'S PAINTING • INTERIOR SPECIALISTS

35 YEARS EXPERIENCE W/ REFERENCES

NEAT, CLEAN & RELIABLE!

LOCAL • FREE ESTIMATES

978-314-0140

Date		High				Low				Rise	Set	Moon
		AM	ft	PM	ft	AM	ft	PM	ft			
20	Wed	9:46	7.5	10:03	9.1	3:38	0.0	3:46	0.8	5:54	7:39	
21	Thu	10:41	7.7	10:57	9.1	4:34	-0.1	4:42	0.6	5:55	7:37	
22	Fri	11:32	7.9	11:47	9.0	5:25	-0.2	5:34	0.5	5:56	7:35	
23	Sat			12:18	8.1	6:11	-0.2	6:22	0.4	5:57	7:34	
24	Sun	12:33	8.9	1:00	8.2	6:53	-0.1	7:06	0.3	5:58	7:32	
25	Mon	1:16	8.7	1:40	8.3	7:32	0.1	7:48	0.4	5:59	7:30	
26	Tue	1:57	8.5	2:19	8.3	8:11	0.3	8:30	0.4	6:00	7:29	



The attorneys present their case to Judge John Fraser in Lawrence Superior Court.

Peter Vetere, the farm's attorney, argued that state and federal law and several court rulings governing farming allows the removal and sale of sand. He also argued that the town has no authority to stop it or regulate it.

The town, according to the law suit, states that Chapter 49 of its bylaw prohibits the excavation of sand on private land without a special permit granted by the town.

Champlain told the Planning Board his future plans are to excavate the sand in at least three other 5-acre sections.

According to the neighbors, that means 18-wheel trucks, sifters and excavators will continue to operate from 6:15 a.m. until late in the day for months and possibly years.

Neighbor Beth Gramolini said she has to leave home all day because of the noise and vibrations from the mining and extraction. "My life has been devastated. This has to end," she said.

Not all neighbors oppose the mining. Some support it, as Champlain told The Town Common, because he gives them produce raised on the farm. ♦

Random 'Sand Notes' Compiled by The Town Common

Date Filed: 8/13/2025 8:26 AM
Superior Court - Essex
COMMONWEALTH OF MASSACHUSETTS
SUPERIOR COURT DEPT.
CASE No. 2577CV00825-C

Town of Georgetown, by and through its Board of Selectmen (Plaintiff) v. Robles Excavating, Inc.; Todd Champlain; and Marry K. Potters, as Trustee for the Mary K. Potter Living Trust (Defendants)

PLAINTIFF'S EMERGENCY
MOTION FOR TEMPORARY
RESTRAINING ORDER
Granted, August 14, 2025

'THE LETTER'

In a letter dated 20 May 2025, Georgetown Town Planner Frank O'Connor, Jr. notified the property owner that "It has come to our attention that work is being performed without required permits(s) at your property, located at 214 North Street, Georgetown, MA."

O'Connor went on to detail that while Georgetown is a "Right to Farm community, there is not any exemption to the need for a farm to obtain a Soil Importation permit" in Mass. General Laws.

Accordingly, O'Connor demanded that the property owner apply for a Soil Importation Permit and noted that failure to do so could result in

fines of not more than \$1,000 per day, or imprisonment for not more than one year, or both.

He concluded that "No work shall be done until a permit is issued and the required inspections completed."

The property owner, Mary K. Potter did not stop her contracted sand mining operation. Her excavator Todd Champlain continued to mine, screen, and arrange for loading of large transport trucks which ran typically 10 - 14 hours per day, with individual trucks entering and departing approximately every 10 minutes throughout the day.

In his court rebuttal, Champlain noted that he does not require a permit, and presented his multiple cross-outs and "n/a" (not applicable) notations on his submission to the town. Potter attempted to stop Champlain a day before the court hearing. Prior to that, for months she allowed the mining to continue at her property. ♦

'THE POLICE'

Number 214 North Street was an active location for the Georgetown Police last week, as they were called to the scene multiple times, by multiple people, including:

Monday 8/11: Mary Potter called police at 5:16 a.m. "reporting an email from Fish and Wildlife containing a cease and desist order for the contractor (Todd) ... she does not want him on the property conducting work ... Police noted that Todd was wanted on an outstanding court warrant. Sgt. Jenkins and Officer Carrera served the warrant, transporting Todd to the station. Lt. Rodden transported Todd to Lynn District Court on Docket Number 25 1 3 CR00 1637 where the case against him regarding a unlicensed driver driving an unregistered vehicle was dismissed - not at fault.

Tuesday 8/12: Todd Champlain called police at 6:45 a.m. stating that about "eight parties were blocking him from access to the dig site. He states he feels threatened by them and describes them as Hell's Angels."

Officers Sepe, and Straker responded initially with Sgt. Jenkins and Officer Carrera also responding

Continued on page 4

Tea ♥ Coffee ♥ Whimsy
Georgetown, Ma

Tea Parties, Special Events and More!
10 E. Main St., Georgetown, MA
978-352-8200
www.hattersteashoppe.com



Dementia-Friendly Equine Assisted Program

It Takes a Herd™ is a non-riding equine program for care partners and care recipients living with dementia. The goal of the program is to help care partners return to their original roles within the partnership and to strengthen the relationship through connection, camaraderie and community. The program utilizes horses as a conduit and provides a safe, non-judgmental environment where participants are given the opportunity to share an equine experience.

It Takes a Herd™ meets once a week for 4 consecutive weeks. During the 2-hour session, participants individually and jointly have the opportunity to meet, groom, pet, lead and engage in other activities with horses along with their partners (currently only ground activities). Both the care partner and care recipient participate in meaningful activities that promote purposeful engagement, encourage independence, build confidence, and foster empowerment. Care partners are encouraged to step outside of their role for a time and re-connect with their loved one without the burden of care. Throughout the program care partners enjoy moments of respite and time to connect with other participants who understand the experience of caregiving. While participating in the program, care partners and care recipients find their "Herd" comprised of others in the program who encourage, support, and validate the feeling that they are not alone in their journey through dementia.

Each week, a different theme is presented to care partners and care recipients guiding them to develop better communication skills as they are coached in techniques to minimize the frustrations of caregiving. While working with horses throughout the program, care partners gain a better understanding of how to navigate the disease of dementia while strengthening their partnership in a fun and purposeful environment.

As a result of participating in It Takes a Herd™, care partners and care recipients have reported general improved quality of life, improved mood, improved communication, reduced stress, a reduction in challenging behaviors, feeling more supported, a reduction in social isolation, and overall having a more positive outlook. It Takes a Herd™ helps both the care partner and the care recipient. The program is designed to offer activities that foster connection, community

and camaraderie among the participants. The combination of interaction with the horses, individual and group coaching through the challenges of dementia, and activities that encourage teamwork, have proven to provide meaningful connection and lasting support to the participants.

The program was created and is administered by Georgetown native Karen Coppola, who is a Certified Dementia Practitioner and a lifelong horseman. For 10 years, Karen has been coaching care partners on how to better understand dementia which results in an improvement in overall care for their loved one and serves to reduce the burden of care. Karen's love of horses and heart for people is the foundation of the program. Her vast knowledge of dementia coupled with horse experience is a perfect marriage of skills when coaching partners through obstacles not only in activities with the horses, but also in daily life. She is aware of the unique connection people can have with horses, and coupled with the horses' ability to sense and mirror our emotions is a combination that can have a profound positive impact on both the care partner and the care recipient.

It Takes a Herd™ was created in

2023, and the program has been successfully implemented 7 times at area farms. The program is designed to be delivered at any farm and is currently in partnership with Strongwater Farm in Tewksbury and Lazy J Ranch in Salisbury. We are working with area agencies on aging, the Veterans Administration, and other Veteran organizations to raise awareness and offer this program to participants. This program is open to any person living with dementia and their care partner. Our goal is to continue to offer this service free of charge to participants through fundraising efforts. It Takes a Herd™ is a strong supporter of veterans and veteran programming and encourages veterans to attend, either as a person living with dementia and as a caregiver of a loved one with dementia. Also, any veterans willing to volunteer in the program are welcome to inquire.

If interested in participating in the program or would like to support It Takes a Herd™, please contact Karen Coppola ~ karen4159@msn.com

It Takes a Herd™ was recently featured on Boston 25 News on Wednesday, July 23rd, 2025 under the title, "Mass farm harnessing calming power of horses to help veterans, caregivers cope with diseases." ♦

PORT GUTTERS

***On-site Custom Fabrication and Installation of 5" & 6" Seamless Gutters**

***Aluminum & Copper Gutters**

***Leaf Screen Installations**

Call for a free Quote
978-465-1844

Located in Salisbury, MA

follow us @portgutters | www.portgutters.com

Custom gutters, precise installs, zero stress

The Town Common
LOYAL ADVERTISERS WITH LOYAL CUSTOMERS
advertise@TheTownCommon.com 978-255-3015

Caring, Compassionate, Dignified Service when you need it most.



F. S. ROBERTS & SON
FUNERAL HOME
A Tradition of Service, A Legacy of Trust

We Offer:

- Personalized and Traditional Funerals
- Cremations • Graveside Services
- Memorial Services
- Advance Planning Options

Jeffrey E. Megna, CFSP

Licensed Funeral Director/Embalmer (Type 3), Owner

14 Independent St., Rowley, MA
www.fsrobertsandson.com
office@fsrobertsandson.com
978-948-7763

THE TOBACCO SHACK
ROWLEY, MA
COMFORTABLE SMOKING LOUNGE WITH WI FI
WIDE VARIETY OF NEW CIGAR PRODUCTS
PREMIUM CIGARS AND ACCESSORIES
WE ARE NOW A PROUD RETAILER OF
THE BLACK BOTTLE BEARD CO PRODUCTS
PLUS YOUR FAVORITE TEAMS ON OUR BIG SCREEN

162 Newburyport Turnpike,
Rte 1, Rowley
Next to Agawam Diner
978-948-2417

BUYING
COINS • GOLD • SILVER
978-561-1893
TOPSFIELD COIN & JEWELRY, LLC

PCGS **NGC** **Numismatic Guaranty Corporation AUTHORIZED DEALER**

Topsfield Village Shopping Center
30 Main St., Topsfield, Mass.

Pike Marine
Wolfeboro Boats
Classic 15
Powered by Mercury outboards

UP TO
\$500 REBATE **UNTIL 8/30!**
+ 7 YEARS OF FACTORY-BACKED COVERAGE
WHEN YOU BUY A MERCURY 2.5 TO 30HP OUTBOARD

MERCURY
GO BOLDLY.™

Pike Marine
MAKING WAVES

80 Main St., Essex, MA
978-768-7161
www.pikemarine.com

GEORGETOWN SAND WARS

Continued from page 2

as backup. An additional unit was also requested from Newbury. Vibol Thou of Gardner, Mass., and Lung Chea of Lowell, Mass. who were part of the group blocking the entry road apparently told the officers they "did not know why they were there but had just been hired to block the driveway. Property owner (Kathy Potter) claimed no knowledge regarding their presence." Several minutes later they provided a key to a license driver to get the truck blocking the entrance off the property.

Tuesday 10:12 a.m.: Champlain informed police that items in excess of \$400,000 were missing from the job site overnight. This included:

- (1) Komatsu PC-78 excavator (black & green, \$100k)
- (1) NPK GH7 hydraulic hammer (value \$139k)
- (1) NPK GH12 hydraulic hammer (value \$169k)
- (1) Komatsu PC-27 mini excavator (black & green, value \$30k)
- (1) NPK PH-4 hydraulic hammer (value \$28k)
- (2) Holmes plows 14' (grey, value \$15.5k each)
- (1) Wacker Neusson compactor (black & green, value \$10k)
- (1) 48" Lemac bucket (value \$1k)

In his narrative, Sgt. Daniel Jenkins noted: "I asked Champlain if he could produce more paperwork on the equipment (particularly the excavators), and he informed me that he would have to go back to Middleton to retrieve them from his residence. Champlain agreed he could bring in the paperwork after court today so the items could be entered as stolen. Champlain informed me that he believes Mary Potter's friend Scott Millbury took the items sometime overnight. I asked him why, and he informed me that they are trying to drive him off the property.

I approached Potter's house to inquire about her ring camera that is facing the driveway and would have an unobstructed view of any vehicles/equipment coming and going from the property. **I met with Potter, and she informed me that she erases the camera's video records every day, and that she did not see anything coming or going throughout the nighttime.**

At 1415 hrs, I made contact with Scott Millbury (Mary Potter's boyfriend) who informed me that he had no knowledge of the missing machinery ..."

At 2:02 p.m., Bentley Warren Construction reported to police that 3-4 of their trucks were not being allowed onto the property and were waiting on North Street. Property owner stated she decided to block access to incoming trucks. ♦

Rowley's Retirement Flag Box Dedication Ceremony

ROWLEY – Walt Pomerleau gave the following summary as he thanked Jessica Garron for spearheading an effort to place a U.S. Flag Retirement Collection Box at the Rowley Fire Headquarters at 473 Haverhill Street (Rte. 133):

"Good morning. On Behalf of the Town of Rowley Veterans Committee, I want to extend a heartfelt thank you for joining us today for this meaningful ceremony. Your presence here speaks volumes about the pride we share in our community and the deep respect we hold for the symbols that represent our nation.

Today's dedication of the retirement flag box is more than just a gesture - it is a commitment to honoring the American flag with the dignity it deserves. This box will serve as a respectable resting place for flags that have flown proudly and fulfilled their duty. It ensures that when a flag reaches the end of its service, it is retired with reverence, not discarded without thought.

The flags collected will be retired in accordance with the U.S. flag Code which states that "The flag, when it is in such condition that is no longer a fitting emblem of display, should be destroyed in a dignified way, preferably by burning."

The Veterans Committee had noted that "this past year, Jessica presented to the Rowley Board of Selectmen, a proposal for a community project - to install a U.S. Flag Retirement Box.

Working with the Veterans Committee, a new box was recently installed. This was a community project that involved the Veterans Committee, Board of Selectmen, Police Department, Fire Department, Town Hall, and the Highway Department.

A flag retirement box serves as a designated, respectful receptacle for worn or damaged American flags, ensuring they are retired in a dignified manner."

At the ceremony, Jessica received a citation signed by all members of the Rowley Board of Selectmen, and a citation from the State Senate.

Jessica will attend the Tisch School of the Arts at New York University in the fall. ♦



Jessica Garron being introduced by Walt Pomerleau. (Photo: Lonnie Brennan)



Jessica Garron looks on as 'first flags' are deposited in the retirement box by Rowley residents. (Photo: Lonnie Brennan)

Reminder - School Clothes: Donate, Shop!

By Sarah Nicholson
Rowley Public Library Youth Services

ROWLEY – Back to school time is rapidly approaching, and there's nothing more costly than new clothes! Rowley Public Library and Striving for Sustainability have a solution for you; a free back to school clothing shop! From July 14th until August 29th you can drop off your gently used baby, children's and teen's clothing at the Rowley Public Library, 500 Wethersfield Street, or 41 Wethersfield Street. There will also be a drop-off spot at Green Fest on August 9th.

Join us on August 30th from 11AM to 1PM for free shopping! Please note, we are not accepting undergarments of any kind. Don't have anything to donate? Don't worry! You're welcome to come and shop regardless. ♦

Sold Single Family Homes

LIST NO	STATUS	ADDRESS	TOWN	LIST	SF. TYPE	BATHS	LIST PRICE	SALE PRICE
73384496	SLD	139 Market St	Amesbury, MA	AN8113	Detached	1	\$490,000	\$470,000
73392732	SLD	26 Beacon St	Amesbury, MA	AN8279	Detached	1	\$625,000	\$625,000
73405252	SLD	9 Bartlett St	Salisbury, MA	AN8279	Detached	2	\$675,000	\$700,000
73378882	SLD	8 Tall Tree Way	Georgetown, MA	AN4359	Detached	3	\$849,000	\$825,000
73373121	SLD	38 Paige Farm Rd	Amesbury, MA	AN7707	Detached	3	\$849,000	\$880,000
73356585	SLD	252 Wethersfield Street	Rowley, MA	AN8387	Detached	3	\$879,900	\$900,000
73371932	SLD	10 Menut Cir	Newburyport, MA	AN7944	Detached	2	\$899,000	\$850,000
73402585	SLD	35 Willowdale	Topshfield, MA	AN6191	Detached	4	\$939,000	\$947,000
73354694	SLD	89 Kittery Ave	Rowley, MA	AN4351	Detached	4	\$999,900	\$1,050,000
73382469	SLD	32 Highwood Ln	Ipswich, MA	AN8596	Attached	4	\$1,150,000	\$1,150,000
73397065	SLD	12 Coombs Cir	Newburyport, MA	AN4850	Detached	3	\$1,400,000	\$1,300,000
73396082	SLD	94 Old Right Rd	Ipswich, MA	AN2968	Equestrian	3	\$1,400,000	\$1,450,000
73375372	SLD	485 Main St	Amesbury, MA	AN6958	Detached	3	\$1,450,000	\$1,450,000
73402646	SLD	49 Sheffield Road	Boxford, MA : East Boxford	AN6420	Detached	4	\$1,595,000	\$1,540,000
73405559	SLD	6 Butler St	Newburyport, MA	AN6420	Detached	5	\$1,749,000	\$1,870,000
73376130	SLD	226 Water St	Newburyport, MA : Joppa	AN8279	Detached	3	\$1,995,000	\$2,050,000

Residential and Commercial Real Estate

978-255-4735

91 Bridge Rd Salisbury MA

"It's not about us - It's all about you"

SAVE \$350 when you transform your patio into an outdoor oasis.



- **Instant shade**—at the touch of a button.
- **Enjoy more quality time** with family and friends.
- **Up to 10-Year Limited Warranty.**

Call 1-866-461-1203 now to SAVE \$350 TODAY!



America's #1 Awning!

SPONSOR A COMMUNITY PAGE!
CONTACT LONNIE@THETOWNCOMMON.COM

GROVELAND NEWS

Continued from page 1

the Select Board also presented Tracy with a Key to the Town, honoring his decades of service, volunteerism, and dedication to preserving Groveland's community spirit.

"Tracy's commitment to Groveland is unmatched," said Jason Naves, Chair of the Groveland Select Board. "From his volunteer service to documenting our town's special moments, Tracy embodies the spirit and heart of our community. We can think of no one more deserving to lead our parade for this historic celebration."

The 175th Celebration Parade will be held on September 6, 2025, honoring Groveland's rich history and vibrant community life. Tracy Gilford will lead the procession as Grand Marshal, a role reserved for those who have made a lasting impact on the town.

All are encouraged to join in the festivities and celebrate both the town's milestone anniversary and the remarkable contributions of Tracy Gilford. Details about the 175th Celebration Parade can be found at <https://tinyurl.com/groveland175th> or <https://www.facebook.com/events/10074946135926697/>



ARIES (March 21 to April 19) A more harmonious aspect favors all relationships. Family ties with mates and children are strengthened. Libra is Cupid's choice to win the amorous Arian's heart.

TAURUS (April 20 to May 20) The bold Bull is ready to take on fresh challenges. Expect some opposition as you plough up new ground, but supporters will outnumber detractors.

GEMINI (May 21 to June 20) An upcoming job change could mean uprooting your family to a far-distant location. Weigh all considerations carefully before making a decision one way or the other.

CANCER (June 21 to July 22) A long-standing problem is resolved by a mutually agreed upon compromise. You can now focus on getting the facts you'll need for a decision that you'll soon be asked to make.

LEO (July 23 to August 22) The Big Cat needs to be wary of what appears to be a golden investment opportunity. This "sure thing" could turn out to be nothing more than a sack of kitty litter.

VIRGO (August 23 to September 22) You give of yourself generously to help others, but right now, you must allow people to help you. Confide your problems to family and trusted friends.

LIBRA (September 23 to October 22) Relationships benefit from a strong harmonious aspect. Things also go more smoothly at work. Someone you thought you'd never see again asks for a reconciliation.

SCORPIO (October 23 to November 21) A minor distraction interferes with travel plans, but the delay is temporary. Meanwhile, expect to play peacemaker once again for feuding family members.

SAGITTARIUS (November 22 to December 21) Keep positive momentum going on the home front. Arrange your schedule to spend more time with your family. You'll soon have news about a certain job change.

CAPRICORN (December 22 to January 19) Control your possessive tendency that sometimes goads you into an unnecessary display of jealousy. You could be creating problems where none currently exist.

AQUARIUS (January 20 to February 18) A new project holds some challenges that you hadn't expected. But don't be discouraged; you'll find that you're more prepared to deal with them than you realized.

PISCES (February 19 to March 20) Yours is the sign of the celestial chemist, so don't be surprised if you experience a pleasant "chemistry" betwixt yourself and a new Leo in your life.

BORN THIS WEEK: You enjoy being fussed over, as befits your "royal" Leonine nature. You also have a strong loyalty to family and friends.

© 2025 King Features Synd., Inc.

Visit
The Town Common
www.thetowncommon.com

Upcoming Events

All Events are Free Unless Otherwise Noted

AMESBURY
Thurs., Aug 21st. Noon- 1:30 pm.
Networking & Mixer, 5 Market Square.
Amesbury Chamber of ACommerce.
\$5.00 per person. Register at www.AmesburyChamber.com.

IPSWICH
Wed., Aug 20, 6-9 p.m.
Date My Friend Ipswich Ale Brewery, 2 Soffron Lane. Come and check out folks who will pitch their friends to a group of singles. 21+.
Wed., Aug 20, 8 - 11 p.m.
Open Mic Night - Carrollton Club 498, 9 Topsfield Rd.
Friday, Aug 22, 8:30 - 10 a.m.
Walk with us! Hiking series - Kamon Farm & Turkey Hill
Register at: <https://tinyurl.com/walk-withus22>

Tues, Aug 26, 6-8 p.m.
Ipswich Downtown Tuesdays
Music, Poetry, and Dance
4 Union Street

NEWBURYPORT
@Newburyport Library:
Mondays & Thursdays from 2:30 pm to 3:30 pm: Drop-In Tech Time (IN PERSON). Bring your simple technology questions for a drop-in session. Sessions can last up to 30 minutes and will be run with available staff on a first come, first served basis. Contact info@newburyportpl.org or call us at 978-465-4428 x 2 with questions.
Thursday, August 21st at 6pm: Newburyport Library
iPhone Photography: Use Your iPhone Camera Like a Pro (VIRTUAL). Learn about the iPhone cam-

era system from a professional photographer so you can improve your photography skills and take better photos. This is a two-part program for all skill levels and for iPhone models 12-16 with iOS 18. Virtual registration required.
The Newburyport Art Band of Brushes present “Through Our Eyes” An exhibit celebrating the joy of painting outside. This exhibit and sale of their paintings will be held in the Newbury Town Library, 0 Lunt Street, Byfield, MA, thru September 6th.
For more information on the Band of Brushes go to their website: www.band-ofbrushes.com

Library Hours: Tuesday – Friday 9am-5pm. 978-465-0539 Church, Portsmouth, N.H.)

SALISBURY
Wednesday August 13 6:45 - 8 p.m.
Salisbury Beach Christian Concert
Series - Salisbury Beach Center - 6:45 BCA Chapel Band (Bradford Christian Academy, Haverhill) 8:00 The Fourth (Connect Comm).

Add your organization's event to our calendar.
Send details to: editor@thetowncommon.com



*** NEW ***
WANTED: HOMES FOR 100+ FREE NEWSPAPER RACKS

Available for your senior center, community center, business, office, condo ...
Do you want to share the The Town Common ?
Let us know!
We always seek to improve our wide and vast distribution to make it easier to get a copy.

Contact Lonnie:
Lonnie@thetowncommon.com

Watch us Grow Throughout 2025!
advertise@TheTownCommon.com
The Town Common
Come Home to Community News



THE COMMONWEALTH OF MASSACHUSETTS
MASSACHUSETTS DEPARTMENT OF TRANSPORTATION – HIGHWAY DIVISION
NOTICE OF A VIRTUAL PUBLIC INFORMATIONAL MEETING

Project Description: Ipswich – Resurfacing and Related Work on Central and South Main Streets
Project File No. 605743

A Virtual Public Informational Meeting will be hosted on the MassDOT website below to present the design for the proposed project in Ipswich, MA.

WHEN: 6:30 PM, Tuesday, August 26, 2025

PURPOSE: The purpose of this meeting is to provide the public with an update of the project and discuss the project schedule. An overview of the project improvements will also be presented. All views and comments submitted in response to the meeting will be reviewed and considered to the maximum extent possible.

PROPOSAL: The proposed project consists of roadway corridor and intersection improvements on Central Street and South Main Street, from Mineral Street to County Street. Improvements include full pedestrian accommodations and on-road bicycle accommodations, intersection reconfiguration to revise the existing traffic patterns at North Main Street / Market Street (a.k.a. Market Square) and at County Street / Poplar Street. The project includes a new traffic signal system at Market Square, geometric modifications, stormwater drainage system upgrades, ADA/AAB compliant curb ramps and sidewalk, pavement rehabilitation, new signage and pavement markings along the corridor and at intersections. Landscape and streetscape elements that complement and enhance the historic character of the area will also be included in the project.

This meeting is accessible to people with disabilities. MassDOT provides reasonable accommodations and/or language assistance free of charge upon request (e.g interpreters in American Sign Language and languages other than English, live captioning, videos, assistive listening devices and alternate material formats), as available. For accommodation or language assistance, please contact MassDOT’s Chief Diversity and Civil Rights Officer by phone (857-368-8580), TTD/TTY at (857) 266-0603, fax (857) 368-0602 or by email (MassDOT.CivilRights@dot.state.ma.us). Requests should be made as soon as possible and prior to the meeting, and for more difficult to arrange services including sign-language, CART or language translation or interpretation, requests should be made at least ten business days before the meeting.

This meeting will be hosted, or a cancellation announcement posted, on the internet at <https://www.mass.gov/orgs/highway-division/events>.

JONATHAN GULLIVER
HIGHWAY ADMINISTRATOR

CARRIE E. LAVALLEE, P.E.
CHIEF ENGINEER
8/13, 8/20

LEGAL NOTICE
NOTICE OF PUBLIC SALE

Notice is hereby given by Newburyport Towing Service, Inc. 27 S. Hunt Road, Amesbury, MA, pursuant to the provisions of Mass G.L.c. 255, Section 39A, that they will **auction the following vehicles August 28, 2025** on the website <http://sta.ibidsmart.com>. **The auction will end at 1:00 p.m.** and buyer registration is required. Those that do not sell at auction will be sold on or after August 28, 2025 by private or public sale to satisfy their garage keepers liens for towing, storage, and notices of sale:

1. 1998 Ford Ranger VIN 1FTYR10C0WTA47206
2. 2010 Subaru Impreza VIN JF1GH6A61AG827226
3. 2014 Chevrolet Cruze VIN 1G1PD5SB2E7356410
4. 2012 Ford Fusion VIN 3FAHP0HA2CR424253
5. 2012 Toyota Camry VIN 4T1BF1FK6CU626439
6. 2017 Chevrolet Express VIN 1GCGWGAFF2H1349058
7. 2002 Yamaha V Star 1100 Classic VIN JYAVP11E22A029574
8. 2001 Chevrolet Suburban VIN 3GNFK16T31G184057
9. 2012 Kia Sorento VIN 5XYKT3A61CG280482
10. 2010 GMC Sierra 1500 VIN 1GTPKTE03AZ169798
11. 2002 Ford Ranger VIN 1FTYR10U12TA63871

Vehicles are being stored at Newburyport Towing Service and may be viewed by appointment only.
Walter L. Lowell 8/6, 8/13, 8/20

Free Admission!

2025 Salisbury Beach Christian Concert Series

Every Wednesday Night on The Oceanfront Stage

Aug. 20, 6:45-9:00

Direct From Nashville, TN
Country Music Awards 5 Time
Christian Country Group of the Year!

Aug. 27 6:45 Kingston FCC Worship Team
Kingston First Congregational, Kingston, NH

8:00 BPC Praise Band
Byfield Parish Church, Georgetown, MA

\$5 parking at Broadway Parking
Bring beach/lounge chairs as seating is limited
Enjoy all that Salisbury Beach entertainment center has to offer
For further information, visit ChristianFilmProductions.org

Super Crossword

COMMON FEATURES

- ACROSS**
1 Devices for basement water removal
10 Moves joltingly up and down
17 Possesses
20 Repetition of a process
21 Faze
22 #1 hit for the Jackson 5
23 Clickers for couch potatoes
25 Letter before omega
26 Bygone Brit
27 Bklyn., e.g.
28 Neck backs
30 Fire remains
33 Food zappers
38 Luge, for one
39 "— your best behavior"
41 Starving
42 Really liking
43 Tops worn at proms
47 Rudolph, e.g.
49 "— changed man!"
50 Headlining hip-hopper
51 Lilylike garden staple
52 — Moines, Iowa
53 De Mille of dance
- DOWN**
55 Irene of "Fame"
57 Figure skater Midori —
59 Pointing symbol
60 Xbox or Switch accessory
68 Spiteful
69 Freak out in fear
70 Italian actress Sophia
71 Piece for two
72 Events to rouse candidate supporters
75 Start a volley
76 Op. — (kin of "ibid.")
77 Dwarf planet beyond Pluto
78 — cavae (big blood vessels)
79 City of the White Sox, for short
82 Turnpike exit structures
85 More savage
89 Bro's sib
91 Sweetums
93 Some dueling swords
95 Kett of the comics
96 "Am not!" rejoinder
98 Actress Chaplin
99 Beer grain
- ACROSS**
100 Floor numbers appear on them
104 Monetary penalties
105 "R.U.R." playwright
106 Like a res. of the U.S.
107 On the job
109 Every once — while
110 Theme of this puzzle
119 And more, in brief
120 Small hardware item split lengthwise
121 Drink with tapioca pearls
122 Squealer
123 Toppers for certain auto engine parts
124 Wandering pooches
- DOWN**
1 "Park it!"
2 Off-roading truck, in brief
3 Gibson of "Mad Max"
4 Come before
5 Puts asphalt over
6 Elec., water or gas
7 Fine rain
8 Luau chow
9 Lead-in to cone
10 Court case hearer
11 Very taxing
12 Like lawns needing to be cut
13 Lead-in to con
14 Passé PC screen type
15 Lead-in night
16 Emmy-winning journalist
17 Occurred
18 No-show
19 Barber's tool
24 Seth Meyers' network
29 Very eager
30 — Spumante
31 Potential target of urban renewal
32 Certain six-pointed polygon
33 — scale of hardness
34 Still having a shot to win
35 Hendrix hairdo
36 Victory signs
37 Book version
39 Big snakes
40 Psychic "gift"
44 Sketched
- ACROSS**
45 Indy vehicle
46 — II (Gillette razor brand)
48 Pt. of NBA or NCAA
51 Vietnamese capital
54 Like sexist jokes
56 Arrives like fog or the tide
58 Of time past
59 "Better Call Saul"
60 Practical joke
61 "Raggedy" doll
62 Sticks in the mud
63 Luigi's three
64 Notes after dos
65 Like Russia, continent-wise
66 Morning bugle call
67 Enhaloed Fr. woman
69 Sound of falling rain
73 Ethereal
74 Animation
75 Feudal peasant
78 "Luka" singer
79 More impudent
80 Nickname for Georgia's capital
- DOWN**
81 Affect one another
83 Muralist Joan
84 Look intently
86 "Green" sci.
87 Jamaica's Ocho —
88 Anderson Cooper's network
90 Retired JFK jets
92 Roof edge
93 Gets lathery
94 Left out
97 Madrid's land, in Italian
101 In spite of the fact that, for short
102 Colorful salamanders
103 "— tu" (Verdi aria)
104 In a suitable manner
107 Truncated form of a wd.
108 Huge horn
111 "Bali —"
112 Unwell
113 Org. for the Eagles, but not the Ravens
114 0.5 fl. oz.
115 Crude house
116 Plains tribe
117 Like nos. below zero
118 Carrier to Stockholm

1	2	3	4	5	6	7	8	9		10	11	12	13	14	15	16		17	18	19	
20										21								22			
23									24									25			
			26						27							28	29				
30	31	32						33	34					35	36	37					
38						39	40					41						42			
43					44					45	46			47			48				
49					50								51						52		
	53			54						55		56				57		58			
59							60	61	62					63	64				65	66	67
68						69						70						71			
72					73						74						75				
				76						77						78					
79	80	81		82			83	84			85		86	87	88			89		90	
91				92						93								94			
95						96				97			98					99			
100					101						102	103					104				
105									106							107	108				
109					110	111	112	113						114	115				116	117	118
119					120								121								
122					123								124								

©2025 King Features Syndicate, Inc. All rights reserved.

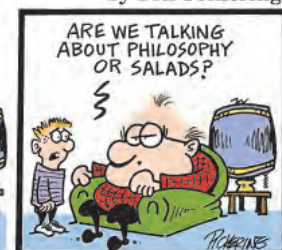
Just Like Cats & Dogs

by Dave T. Phipps



The Spats

by Jeff Pickering



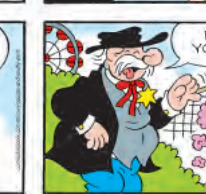
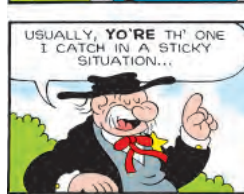
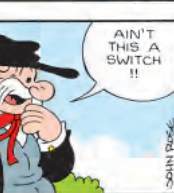
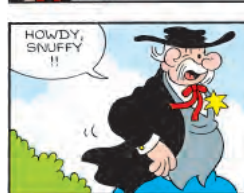
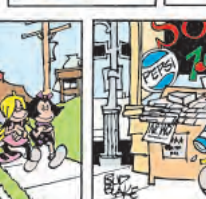
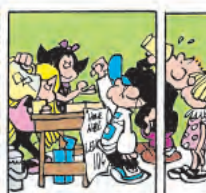
Amber Waves

by Dave T. Phipps

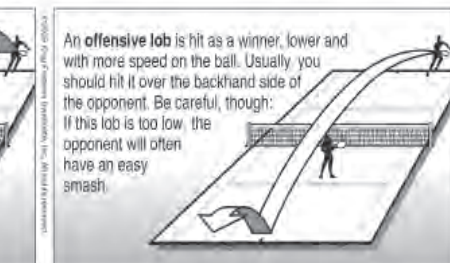
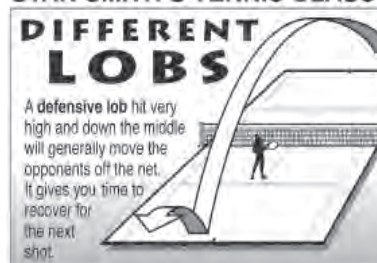


TIGER

by BUD BLAKE



STAN SMITH'S TENNIS CLASS



PUZZLE ANSWERS																																																																																																																																																																																																																																																																																																																																																																																																																																																																																																																																																																																																																																																																																																																																																																																																																																																																																																																																																																																																																																																																																																																																																																																																																																																																																																					
8	6	3	7	5	4	8	6	3	7	5	4	8	6	3	7	5	4	8	6	3	7	5	4	8	6	3	7	5	4	8	6	3	7	5	4	8	6	3	7	5	4	8	6	3	7	5	4	8	6	3	7	5	4	8	6	3	7	5	4	8	6	3	7	5	4	8	6	3	7	5	4	8	6	3	7	5	4	8	6	3	7	5	4	8	6	3	7	5	4	8	6	3	7	5	4	8	6	3	7	5	4	8	6	3	7	5	4	8	6	3	7	5	4	8	6	3	7	5	4	8	6	3	7	5	4	8	6	3	7	5	4	8	6	3	7	5	4	8	6	3	7	5	4	8	6	3	7	5	4	8	6	3	7	5	4	8	6	3	7	5	4	8	6	3	7	5	4	8	6	3	7	5	4	8	6	3	7	5	4	8	6	3	7	5	4	8	6	3	7	5	4	8	6	3	7	5	4	8	6	3	7	5	4	8	6	3	7	5	4	8	6	3	7	5	4	8	6	3	7	5	4	8	6	3	7	5	4	8	6	3	7	5	4	8	6	3	7	5	4	8	6	3	7	5	4	8	6	3	7	5	4	8	6	3	7	5	4	8	6	3	7	5	4	8	6	3	7	5	4	8	6	3	7	5	4	8	6	3	7	5	4	8	6	3	7	5	4	8	6	3	7	5	4	8	6	3	7	5	4	8	6	3	7	5	4	8	6	3	7	5	4	8	6	3	7	5	4	8	6	3	7	5	4	8	6	3	7	5	4	8	6	3	7	5	4	8	6	3	7	5	4	8	6	3	7	5	4	8	6	3	7	5	4	8	6	3	7	5	4	8	6	3	7	5	4	8	6	3	7	5	4	8	6	3	7	5	4	8	6	3	7	5	4	8	6	3	7	5	4	8	6	3	7	5	4	8	6	3	7	5	4	8	6	3	7	5	4	8	6	3	7	5	4	8	6	3	7	5	4	8	6	3	7	5	4	8	6	3	7	5	4	8	6	3	7	5	4	8	6	3	7	5	4	8	6	3	7	5	4	8	6	3	7	5	4	8	6	3	7	5	4	8	6	3	7	5	4	8	6	3	7	5	4	8	6	3	7	5	4	8	6	3	7	5	4	8	6	3	7	5	4	8	6	3	7	5	4	8	6	3	7	5	4	8	6	3	7	5	4	8	6	3	7	5	4	8	6	3	7	5	4	8	6	3	7	5	4	8	6	3	7	5	4	8	6	3	7	5	4	8	6	3	7	5	4	8	6	3	7	5	4	8	6	3	7	5	4	8	6	3	7	5	4	8	6	3	7	5	4	8	6	3	7	5	4	8	6	3	7	5	4	8	6	3	7	5	4	8	6	3	7	5	4	8	6	3	7	5	4	8	6	3	7	5	4	8	6	3	7	5	4	8	6	3	7	5	4	8	6	3	7	5	4	8	6	3	7	5	4	8	6	3	7	5	4	8	6	3	7	5	4	8	6	3	7	5	4	8	6	3	7	5	4	8	6	3	7	5	4	8	6	3	7	5	4	8	6	3	7	5	4	8	6	3	7	5	4	8	6	3	7	5	4	8	6	3	7	5	4	8	6	3	7	5	4	8	6	3	7	5	4	8	6	3	7	5	4	8	6	3	7	5	4	8	6	3	7	5	4	8	6	3	7	5	4	8	6	3	7	5	4	8	6	3	7	5	4	8	6	3	7	5	4	8	6	3	7	5	4	8	6	3	7	5	4	8	6	3	7	5	4	8	6	3	7	5	4	8	6	3	7	5	4	8	6	3	7	5	4	8	6	3	7	5	4	8	6	3	7	5	4	8	6	3	7	5	4	8	6	3	7	5	4	8	6	3	7	5	4	8	6	3	7	5	4	8	6	3	7	5	4	8	6	3	7	5	4	8	6	3	7	5	4	8	6	3	7	5	4	8	6	3	7	5	4	8	6	3	7	5	4	8	6	3	7	5	4	8	6	3	7	5	4	8	6	3	7	5	4	8	6	3	7	5	4	8	6	3	7	5	4	8	6	3	7	5	4	8	6	3	7	5	4	8	6	3	7	5	4	8	6	3	7	5	4	8	6	3	7	5	4	8	6	3	7	5	4	8	6	3	7	5	4	8	6	3	7	5	4	8	6	3	7	5	4	8	6	3	7	5	4	8	6	3	7	5	4	8	6	3	7	5	4	8	6	3	7	5	4	8	6	3	7	5	4	8	6	3	7	5	4	8	6	3	7	5	4	8	6	3	7	5	4	8	6	3	7	5	4	8	6	3	7	5	4	8	6	3	7	5	4	8	6	3	7	5	4	8	6	3	7	5	4	8	6	3	7	5	4	8	6	3	7	5	4	8	6	3	7	5	4	8	6	3	7	5	4	8	6	3	7	5	4	8	6	3	7	5	4	8	6	3	7	5	4	8	6	3	7	5	4	8	6	3	7	5	4	8	6	3	7	5	4	8	6	3	7	5	4	8	6	3	7	5	4	8	6	3	7	5	4	8	6	3	7	5	4	8	6	3	7	5	4	8	6	3	7	5	4	8	6	3	7	5	4	8	6	3	7	5	4	8	6	3	7	5	4	8	6	3	7	5	4	8	6	3	7	5	4	8	6	3	7	5	4	8	6	3	7	5	4	8	6	3	7	5	4	8	6	3	7	5	4	8	6	3	7	5	4	8	6	3	7	5	4	8	6	3	7	5	4	8	6	3	7	5	4	8	6	3	7	5	4	8	6	3	7	5	4	8	6	3	7	5	4	8	6	3	7	5	4	8	6	3	7	5	4	8	6	3	7	5	4	8	6	3	7	5	4	8	6	3	7	5	4	8	6	3	7	5	4	8	6	3	7	5	4	8	6	3	7	5	4

The Town Common

CLASSIFIED ADS

CARPENTRY, PAINTING,
AND MORE ...

AMERICAN HOME IMPROVEMENT
CARPENTRY

Repairs & Additions. Interior/Exterior
Painting. Fully Insured. 30 years
experience. Free Estimates. Excellent
Referrals. 978-465-2283

BALDASSARI PAINTING
Painting Interior/Exterior. Wallpapering
& removal. Free estimates 781-953-6890
or 978-688-0161

PAINTING INTERIOR, EXTERIOR
Smoke and water damage ceilings stain
killed, repaired, or replaced, carpentry
interior-exterior repairs, windows
repaired and replaced, gutters cleaned,
repaired or replaced, clean outs and clean
ups of all kinds. General masonry, all
brick work, chimney work, walkways,
etc. (Cell) 978-376-4214, (Home) 978-
374-618

MISC.

GARY'S JUST STUFF MECHANICAL

ITEMS BOUGHT / SOLD &
REPAIRED!

Generators, Outboards, Lawn Mowers,
Snow Blowers, Tune ups, etc., pick-up
and delivery available, Call Gary at (978)
376-4214

WANTED TO BUY

ALWAYS BUYING

Books, vintage posters,
artwork, comic books,
ephemera, and related
printed material.
Single items and entire
collections sought.
bookaugur@gmail.com
978-518-2298

LAND/HOUSING FOR SALE

HOUSE LOT FOR SALE

Monroe, ME - Two acres of land for sale
in the quaint, central Maine town of
Monroe. Roughly 25 miles southwest of
Bangor, 90 miles northeast of Portland
and 14 miles northwest of Belfast.
Package deal (site work) available.
\$50,000 NORTH SHORE HOMES
978-314-7959.

HOUSE FOR SALE - AS IS \$125,000
Searsport, ME - Former captain's house
located in town close to schools and
shopping. 7 BDRM, 1 BA, 2995 sq. ft.,
.55 acre lot. Needs work. Being sold
as-is. NORTH SHORE HOMES 978-
314-7959.

HOUSE LOT FOR SALE
Searsport, ME - Downtown lot near
schools. \$50,000 NORTH SHORE
HOMES 978-314-7959.

3 ACRE LOTS FOR SALE
Searsport, ME - Multiple three acre lots
available in the beautiful, mid-coastal
town of Searsport. Owner financing
possible, package deal (site work) also
available. Prices starting at \$49,900
NORTH SHORE HOMES 978-314-
7959.

EVERYONE READS CLASSIFIED ADS!

Sell a rototiller, an old boat, a huge lot
of old piano sheetmusic...
\$10 PER WEEK or
4 WEEKS FOR \$30!

advertise@thetowncommon.com
978-255-3015

KRAKEN
GAMING

BUY • SELL • TRADE



VINTAGE TOYS:
Star Wars • G.I. Joe
Transformers
MOTU • Action Figures
Godzilla • Robots
70's, 80's, 90's

VIDEO GAMES:
Nintendo • Sega
Atari • SNES • N64
GameBoy • DS • Wii
Xbox • Playstation

POKÉMON:
Buy/Sell/Trade

COMICS/RECORDS

857-272-4723

Open 11-6 daily
174 Nbpt Tpke
US Route 1, Suite 9,
Rowley, MA, 01969

Pratt
Hobby Shop

COINS AND ITEMS WANTED

U.S. Coins, silver, gold,
foreign world money.
Old pocket watches,
wrist watches and costume jewelry
Wheat pennies, Pre-1958

FREE APPRAISAL
Call 978-352-2234

WANTED TO BUY

Gold Scrap, Gold Coins,
Sterling Silver
U.S. Silver Coins pre-1965
.999 Silver Bars
U.S. Silver Dollars
Wartime Nickels 1942-1945
U.S. Clad Half Dollars 1965-1969

HOBBY SUPPLIES

Remote Controlled Vehicles
ESTES Rockets & Supplies,
Plastic & Wood Models / Supplies
Autos, Trucks, Planes, Ships,
X-Acto Sets, Paints & Much More

20 E Main St, Georgetown, MA

Hours:

Closed on Monday, Private
appointments available
Tuesday-Friday 12 - 6 PM
Saturday 10:30 AM - 4 PM
Sunday 12 - 6 PM

Phone: 978-352-2234

Complete Outdoor Shower Room

\$2,250



outdoorshowercreations.com

This is a custom made outdoor
shower that will transform your
beach house, lake house or
backyard into a natural shower
experience. Showers are made
from 100% sustainable cedar/
doug fir and are 4' x 4' x 7' or 3'
x 5' x 7'. Shower is completely
assembled with piping and ready
to use. The source of both hot
and cold water comes from your
home and is easily connected
to the shower controls or we
can supply a propane fired HW
heater (additional costs).

Delivery within 25 miles of 03865
is \$125 or free customer pickup.

978-473-7363

SERVICE DIRECTORY

**YOUNG'S**
PLUMBING • HEATING • AC
Licensed & Insured 978-535-4888
www.youngsplumbingma.com

Find your new customer!
NEW!! THIS AD: \$10/week
advertise@thetowncommon.com

LAW OFFICE OF
STEVEN MERRITT

For Direction Only a Lawyer Can Provide...
...Call Attorney Steven Merritt

Family Law Criminal Law
Restraining Orders Bankruptcy
Contempt of Court Landlord/Tenant
Civil Litigation Special Education Law

Creative
and winning
solutions
stem from
life experience

Free Consultation! 978-973-9400

PROFESSIONAL
Interior Painting

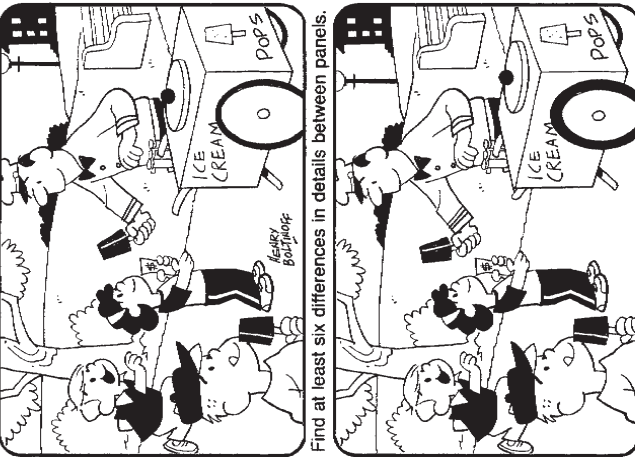
Sea Valley Painting

978-484-2437



HOCUS-FOCUS

BY HENRY BOLTINOFF



Find at least six differences in details between panels.

Differences: 1. Arm is raised. 2. Stripe is added to sleeve. 3. Light
is moved. 4. Lid on ice cream cart is moved. 5. Tire is thicker.
6. Cart handle is shorter.

Weekly SUDOKU

			2			3	7		8
		6							
						2			
			5						4
			3	5					
		9	8	6	3	2	9	3	5
					6	3	2	4	5
5	1	3	9	8	6		9	4	5
					6		3	8	9
								2	

Place a number in the empty boxes in such a way
that each row across, each column down and each
small 9-box square contains all of the
numbers from one to nine.

DIFFICULTY THIS WEEK:

DAVID

HEATING & COOLING

HELP WANTED: 2 POSITIONS

HVAC SERVICE TECH
3 YEARS EXPERIENCE

OIL BURNER TECH
WITH MASS. OIL LICENSE
3 YEARS EXPERIENCE

\$40-50 / hr. TOP WAGES TOP BENEFITS

978-346-4216 Merrimac, Mass.
DavidHeatingandCooling@gmail.com

You've Worked for the Rest, Now Work with the Best

HELP WANTED

The Town Common

One Good, Solid
Commissioned Part-Time Contracted
Advertising Account Manager

PERFECT JOB TO FILL A FEW HOURS
A COUPLE OF DAYS/WEEK

Upper North Shore of Mass. and Coastal NH
Join us and help local businesses grow
in The Town Common.

Account Managers set their own hours, work
when they want, where they want, and earn a
generous commission.

Contact us today at 978-255-3015 or
advertise@thetowncommon.com

Be
Responsive
to Our
Advertising
Partners

Work 4
hours
or work 20
Your call!

Earn Extra
Money to Enjoy
Retirement
Keep Busy
Meet People
Help Our Paper
Grow

Help
Large and
Small
Businesses
Get Loyal
Customers

Caring, Compassionate, Dignified Service when you need it most.



14 Independent St., Rowley, MA
www.fsrobertsandson.com
office@fsrobertsandson.com
978-948-7763

F. S. ROBERTS & SON
FUNERAL HOME
A Tradition of Service. A Legacy of Trust

We Offer:

- Personalized and Traditional Funerals
- Cremations • Graveside Services
- Memorial Services
- Advance Planning Options

Jeffrey E. Megna, CFSP
Licensed Funeral Director/Embalmer (Type 3), Owner

★ FRANCHISE OPPORTUNITIES AVAILABLE ★



JUNK
JUNK BABY!
Unbeatable Junk Removal

978-810-8424 | junkjunkbaby.com

★★★★★
North Shore's Best! Five Star Rating! Fully Insured. Single Item to Full House Cleanout.

**REFRESH**
A DIGITAL AGENCY

Increase Revenue Today!
Bring your web presence up to code with fresh designs, ads, and more.

Start Creating.
refreshstudio.com

Web Development • Web Hosting
Social Media Marketing • Web Design
SEM / Pay Per Click Marketing
Search Engine Optimization (SEO)
Logo Design • Print Design

Bradley Maravalli
Owner / Developer
978-500-9369

Two New Assistant Principals to Join Pentucket Middle High School

Pentucket Regional Middle High School is welcoming two new Assistant Principals for the 2025-2026 school year.

Assistant Principal Trina Forrest brings 23 years of classroom experience to the role, including the past 15 years as a classroom and special education teacher at the John C. Page Elementary School in West Newbury.


She holds bachelor's degrees in Elementary Education and Communications and a master's degree in Moderate Special Needs, all from the Boston College Lynch School of Education.

Assistant Principal Lindsay Donaldson joins Pentucket from Marblehead Public Schools. She has served as Assistant Principal at Marblehead High School since 2022, after 12 years as a classroom teacher.


She holds a bachelor's degree from Boston University, and a master's degree in History from Salem State College.

They will succeed Caitlin Burke and Andy Bub, who have left the district for other career opportunities.

"Thank you to Ms. Burke and Mr. Bub, whose dedication to our students made a significant difference in the Pentucket community," Principal Brenda Erhardt said. "We're happy to welcome Ms. Forrest and Ms. Donaldson to the Middle High School team and look forward to their contributions." ♦



Trina Forrest



Lindsay Donaldson

Parish Road, Georgetown Ask about special financing offer



Jason Grzybek
REALTOR®

Paul Herrick
REALTOR®

HERRICK LUTTS
Realty Partners

office: 978-927-1959 mobile: 978-430-2881
website: herricklutts.com



AULSON ROOFING
Est. 1974

978-975-4500

AULSONROOFING.COM