

Where local businesses advertise...

Post. Std.
U.S. Postage
PAID
NEWBURYPORT, MA
Permit No. 51
POSTAL CUSTOMER

The Town Common

LARGEST DISTRIBUTION ACROSS THE NORTH SHORE OF MA & COASTAL NH

www.thetowncommon.com

Wednesday February 15, 2023 Vol. 19, No. 16

FREE

Trade Alan Truck Stop To Be Redeveloped

By Stewart Lytle, Reporter

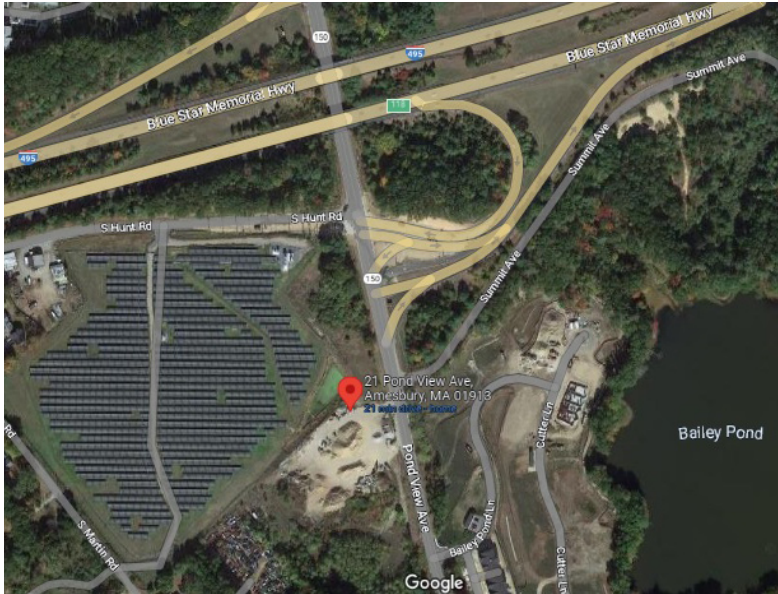


Photo provided by Google Maps

Trader Alan's site today as seen from an aerial view.

AMESBURY – What To Do With an Old Truck Stop? The city of Amesbury is taking the next step to find out.

It is asking for proposals from private developers for how best to redevelop the once popular Trader Alan's Truck Stop on Pond View Avenue near Interstate 495. The almost 7-acre site is adjacent to the city's solar field and across the street from townhomes in the Village at Bailey's Pond.

Abandoned since the 1990s and seized by the city through tax foreclosure in 2001, the site once was an active place where travelers and locals could grab a meal, spend the night or get your car or truck filled with gas or repaired.

City officials now hope the old truck stop could become a new hub of commercial activity.

"Proposing this site for

surplus was one of the first things I did after taking office," Mayor Cassandra Gove said in a statement. "It's an important parcel for redevelopment, the integrity of the neighborhood and for our commercial growth as a community.

"We need to expand our capacity for commercial growth and have very few options to do so. I'm hopeful we receive responses that work for us and look forward to continuing this process."

The 6.8-acre truck stop at 21 Pond View Ave. is zoned for an office park. Although it was once a gas station, an assessment found that the site has no environmental limitations.

After 18 months of studying the site, the city's Disposition Committee, headed by Scott Kelley and Adrienne

Continued on page 3

Newbury Town Hall Fight

By Stewart Lytle, Reporter



Photo by Stewart Lytle

The current Newbury Town Hall, Rt. 1A, Newbury, MA

NEWBURY – Politics are heating to a boil here this spring with an upcoming Town Meeting on April 25 where residents are expected to spar over the proposed new, multi-million-dollar Town Hall.

The Board of Selectmen election will follow on May 9 where two seats will be filled.

Three former and current Selectmen wrote a public letter last week that called on residents to vote against the proposed "campus" town hall that may cost between \$11 million and \$14 million.

Former Select Board members Dr. Vincent Russo and Michael Doyle joined Geraldine Heavey, who announced she will run again for the Select Board, wrote: "It is no surprise that the town employees want you to lock in the funding for their new offices before they ask for money for our kids and fire protection."

They urged Town Meeting members to vote for keeping the town offices at Kent Way off Interstate 95, which "can be done with little or no impact to

our taxes" and put "our hard-earned tax dollars to better use to meet our public safety and our children's education needs."

The town, through its Municipal Building Committee, has been moving forward with plans to create a new municipal campus on the site of the former Town Hall building, fire station and police station.

The much-needed new police station has been completed. The town is considering constructing a new fire station.

The Select Board election is likely to be highly contested with feelings running high in town or social media sites about the future direction the town will take.

Heavey, an attorney, who was elected in 2019 with the highest vote that year for a select person, said she is not running for reelection "because I am tired of being treated like a mushroom."

She wrote that her term on the Select Board has been challenging, "more challenging

Continued on page 3

Rotary Gives Horseback Riding Scholarship

By Ava Moeckel, Reporter

An individual with disabilities will be able to have horseback riding lessons this spring thanks to a scholarship awarded by Rotary Club of Ipswich-Rowley and Windrush Farm in North Andover.

Any disabled adult, at least 18 years old and under 185 pounds, who lives in Ipswich or Rowley, was eligible for the scholarship. The winner will be chosen from essays submitted on why he or she wants to participate in therapeutic riding lessons at Windrush Farm.

Children, adolescents, and adults facing physical, cognitive or emotional challenges can receive quality equine-assisted services at Windrush Farm, which was founded in 1964. Therapeutic riding, unmounted programs and other horse-related services are available.

"We're so excited to welcome an Ipswich or Rowley resident to the farm through this scholarship," Windrush Farm CEO Janet Nittmann said. "We're looking forward to spring, which is a beautiful time of the year at the farm. The timing couldn't be better, and Rotary is about to give someone an unforgettable life experience."

The riding lessons will be conducted in groups, and a physician's statement is required.

SIGNS-BY DOUG

L.E.D. SIGNS
AWNINGS • BANNERS
CARVED SIGNS
BOAT/TRUCK LETTERING

(978)463-2222

ORGANIC Natural Shop

EST. 1982

Vitamins • Supplements • CBD

174 Newburyport turnpike, Rowley
978-561-3219 | M-F 10-6, Sat 10-5
www.organicnaturalshoprowley.com
Naturaldisc@aol.com

IRWIN
CBD ROLL-ON
750 mg CBD
Full-Spectrum Hemp Extract
Net wt. 1.7 oz. (48 g)

Irwin Naturals
20% off
all month

How to Submit Letters to the Editor



Marc Maravalli, B.S., R.Ph.
Publisher/Editor, The Town Common

Letters to the Editor provide a useful way of communicating concerns, issues, or suggestions to all members of the community.

The Town Common encourages all citizens to submit letters concerning issues of interest and concern to the local community.

Letters selected for publication may be edited for length and clarity. Some letters may serve as a catalyst for other articles or coverage, and community leaders and agencies will be offered an opportunity to respond to letters concerning their areas of responsibility.

All letters must be signed and include a daytime telephone number.

Letters may be submitted to:

The Editor
c/o The Town Common
77 Wethersfield St.
Rowley, MA 01969

or preferably via e-mail to:
editor@thetowncommon.com.

The Town Common deadline is 5pm Wednesday (except when a federal holiday necessitates an earlier deadline).

The Town Common serves the communities of the Upper North Shore of Mass. & Coastal New Hampshire and welcomes your participation. Send your Organization or Group Notices, Birth or Engagement Announcements, Photos, Articles and Letters to the Editor, by mail, phone, fax, or e-mail to: 77 Wethersfield St., Rowley, MA 01969
Phone: 978-432-9669
E-mail: news@thetowncommon.com

The Town Common
Marc Maravalli, Founding Publisher / Editor
editor@thetowncommon.com
Graphic Design Services
graphics@thetowncommon.com
Advertising Opportunities
advertise@thetowncommon.com
77 Wethersfield Street
Rowley, MA 01969-1713
Phone: (978) 432-9669
www.thetowncommon.com

The Town Common is not responsible for typographical errors or omissions, but reprint opportunities do exist for prompt notification of such errors. Advertisers should notify The Town Common of any errors in ads on the first day of issuance.
No credits &/or refunds are offered or implied. All material and content cannot be duplicated without written consent of the publisher. The right is reserved to reject, omit, or edit any copy offered for publication.

Copyright 2004-2023 The Town Common® - All Rights Reserved
In loving memory of
Liz Ichizawa, '04-05 Reporter (1956 - 2005)
Jim Wilson, '20-22 Publisher/Editor (1954-2022)



Letters To The Editor

Kristin Kassner Update

Dear Friends,
It's the end of my first full week as your duly elected State Rep, and it has certainly been a whirlwind. I wanted to share with you what we accomplished this week:

After a long wait, last Friday I was sworn in by Governor Maura Healey. It was wonderful to have my husband, son, family and friends with me, as well as Lt. Governor Kim Driscoll and a welcoming committee of my new colleagues, led by my old friend Rep. Ken Gordon.

Monday we hit the ground running, with a Regional Housing briefing, followed by a meeting convened by Congressman Seth Moulton with the other newly elected State Reps from Essex County.

Monday night I met with the Topsfield Select Board and Town Manager, along with Senators Bruce Tarr and Joan Lovely, Rep. Sally Kerans, with whom I share Topsfield, and former 4th Essex State Rep Jamie Belsito. We are in the process in setting up meetings with the Town Managers and Select Boards in Georgetown, Rowley, Newbury, Ipswich and Hamilton.

Tuesday we were back in the State House for a very special event, Wear Red for Women, which brings awareness to the fact that heart disease is the #1 killer of women in this country. My colleagues and I learned about the 2 most important steps in saving lives during a heart attack.

While in the State House, I also found the House Business Office, the office of the Massachusetts Caucus of Women Legislators, and the all-important mail room run by the friendly and fabulous Tito

Rosa.
We ended Tuesday back in district, with a meeting of a wonderful community coalition advocating for the Georgetown Youth Community Center.

Wednesday was full of meetings and phone calls to work on the bills that I will be filing. I am focusing on water, infrastructure, and economic development.

Wednesday night I enjoyed the Hamilton-Wenham LWV Volunteer Fair at the Community House. Our towns are fortunate to have so many dedicated volunteers addressing a variety of issues. It was energizing to see everyone!

Thursday I continued to meet with advocates and work on legislation.

Friday I met with Stephen Crane, the Ipswich Town Manager to discuss budget priorities. Then I met with Ipswich River Watershed Association Executive Director Wayne Castonguay to learn more about ongoing efforts to protect the river ecosystem that provides the water supply to 13 communities.

As much as we accomplished this week, there is still so much to do. I plan to keep you informed about our progress regularly. In the meantime, if you have any questions, or state-related issues that I can help with, please reach out to my office. My legislative aide, Christina Eckert, or I will be happy to assist you!

We will be setting up office hours soon; stay tuned!

This cannot be said often enough: thank you for coming on this journey with me, and thank you for all of your support along the way.

Best,
Kristin E. Kassner
Kristin.Kassner@mahouse.gov

TIDE CHART

Print Media is Tangible and Makes a Lasting Impression on Customers. Place Your Business Sponsorship Here.
advertise@thetowncommon.com

Date	High				Low				Rise	Set	Moon
	AM	ft	PM	ft	AM	ft	PM	ft			
14 Tue	5:23	8.1	6:02	6.9	11:54	0.5			6:40	5:14	☾
15 Wed	6:23	8.3	7:06	6.9	12:04	1.1	12:57	0.3	6:38	5:15	☾
16 Thu	7:25	8.5	8:08	7.1	1:06	1.0	2:00	0.0	6:37	5:17	☾
17 Fri	8:26	8.9	9:07	7.4	2:08	0.8	2:59	-0.4	6:36	5:18	☾
18 Sat	9:24	9.3	10:02	7.9	3:07	0.4	3:54	-0.7	6:34	5:19	☾
19 Sun	10:19	9.6	10:55	8.3	4:03	0.0	4:47	-1.0	6:33	5:21	☾
20 Mon	11:12	9.7	11:45	8.7	4:58	-0.4	5:36	-1.2	6:31	5:22	☾
21 Tue			12:03	9.7	5:51	-0.7	6:23	-1.3	6:30	5:23	☾

The Carr-Petrova Duo to perform "HERS," a program of works by female composers



Violinist Molly Carr (l) and pianist Anna Petrova (r)

The Carr-Petrova Duo featuring violinist Molly Carr and pianist Anna Petrova will perform "HERS," a program made up entirely of works by female composers, on Sunday, Feb. 19, at 4 p.m. at the Unitarian Church, 26 Pleasant St., Newburyport. This will be the first of three concerts in the 2023 Jean C. Wilson Music Series. The concerts will be both presented online and in-person.

Through music and storytelling, the Carr-Petrova Duo will lead the audience through the inspirations, battles, and incredible accomplishments of eight fearless women – from the 13th century's Hildegard Von Bingen to today's Beyoncé. The duo will invite audiences to share in the centuries of heartbreak, struggles, and triumphs that make up the female experience.

Carr and Petrova began playing together during their years at the Juilliard School and the Manhattan School of Music. They have since performed together across Europe, the Middle East and North America, in venues ranging from Lincoln Center to soup kitchens in New Orleans and schools in Gaza. Recent season highlights include a Carnegie Hall debut, praised by the Classical Post as "categorically astonishing in its beauty, ensemble, artistry, quality of sound, and almost uncanny ability to draw into the music." Other recitals have been at the Smithsonian Museum, Jerusalem Filarmonica Chamber Music Series,

and Sala Clemente in Valencia. Their future engagements include a tour of China and performances and masterclasses in Spain, Israel, Italy and the US.

The 2023 Wilson Series will continue with organist Wesley Hall on March 5, presenting a program featuring works of three composers Dieterich Buxtehude, Connor Chee, and Robert Schumann. Then on March 26 the Arpeggione Ensemble Members will be offering "The Salon of Anna Amalia," celebrating the music and influence of the Prussian princess with works by Anna Amalia, C.P.E. Bach, and Mozart.

The Jean C. Wilson Music Series is named for one of the founders and the director of the music series for 28 years. In the beginning, the First Religious Society's chamber music series was designed to be a relief from the dark and grinding New England winter, a time when there was little music being presented in Newburyport.

For many years now under the banner of the Jean C. Wilson Music Series has continued in that aim: to bring light into darkness. Now, under the auspices of the First Religious Society Unitarian Universalist Church, the Music Series typically offers three or four concerts held during the winter months.

Suggested donations are \$20, \$10 for seniors, children and students free. For more information about the concert go to frsuu.org/jean-wilson-music-series or call 978-465-0602 x401.

LEGAL NOTICE NOTICE OF PUBLIC SALE

Notice is hereby given by Newburyport Towing Service, Inc. 27 S. Hunt Road, Amesbury, MA, pursuant to the provisions of Mass.G.L c. 255, Section 39A, that they will auction the following vehicles February 23, 2023 on the website <http://sta.ibidsmart.com>. The auction will end at 1:00 pm and buyer registration is required. Those that do not sell at auction will be sold on or after February 23, 2023 by private or public sale to satisfy their garage keepers liens for towing, storage, and notices of sale:

- 2000 Lincoln Town Car VIN 1LNHM82W2YY762570
- 2014 Honda Civic VIN 19XFB2F81EE233767
- 2000 Acura TL VIN 19UUA5668YA058078

Vehicles are being stored at Newburyport Towing Service and may be viewed by appointment only.

Walter L. Lowell

2/8, 2/15, 2/22

Trade Alan Truck Stop To Be Redeveloped



Trader Alan's site today as seen from Pond View Ave. in Amesbury.

Photo by Stewart Lytle

Continued from page 1

Lennon, would like to see an engineering or technical business locate there.

Examples might be robotics, artificial intelligence and medical pharmaceutical research and development.

The site is conveniently located to I-495, making it

ideal for truck deliveries.

"This property is identified as a Brownfield under state and federal definitions and has been mostly remediated

through the removal of underground storage tanks from the former fueling station. According to the environmental assessments

that have been completed, there are no foreseen limitations for the future use of this property," the request for proposals stated.

Proposals are due at the Office of Community and Economic Development, 39 South Hunt Road, by noon March 27.

Newbury Town Hall Fight

Continued from page 1

than my 14 years on the Melrose Board of Aldermen where despite 11 strong personalities, we all treated each other with civility, respect and inclusivity; more challenging than my time working in Roxbury District Court as supervising attorney

for the public defenders' office, where opposing counsel did not play legal games with the facts or hide them. In Roxbury I saw advocacy without animosity or it turning personal."

She wrote that she hoped her successor would not be a "rubber stamp for the town's

administration."

"I hope while on the board," she wrote, "I have asked the questions that needed to be asked and in so doing have given some transparency to the issues and shed some light onto the dark places that exist within the board."

February Vacation Events at Bradley Palmer State Park

Bradley Palmer State Park is located at 40 Asbury St. in Topsfield. All programs are free and open to the public. Reasonable accommodations upon request. Adults must accompany children. For outdoor events wear appropriate shoes, dress warmly for the weather. Bring water. Inclement weather cancels outdoor events. For more information call (978) 887-5931. <https://www.mass.gov/locations/bradley-palmer-state-park>. Please follow all current COVID guidelines. Visit [Mass.gov/COVID](https://www.mass.gov/COVID).

Whoooo lives in the Woods? Tuesday, February 21, 2023 5:00 – 7:00 p.m. - Owls are fascinating birds that are well adapted to their night existence. Discover more about these creatures of our surrounding woods and become an owl hooter! There will be a short presentation about owls in our area, followed by an owl hooting experience. Appropriate for children 5 years +. Rain/snow cancels. Please dress warmly for the weather, as we will spend half of this program outside. Program will start in the Nature Center near the main parking lot. Pre-registration required: Please email Barbara.buls@mass.gov to pre-register. Call 617-828-1728 for more information.

LEGAL NOTICE - ABUTTERS NOTICE

The Groveland Conservation Commission will hold a public hearing at the Groveland Town Hall, 183 Main St, Groveland, MA, on March 8, 2023 at 7:30pm to consider a Groveland NOI regarding Restoration work consistent with a DEP ACOP at 104 King Street in Groveland. A copy of the application can be viewed by visiting the Groveland Conservation Commission office at Groveland Town Hall, 183 Main St, Groveland, MA.

WANTED
... a professional
Marketing / Advertising
Consultant to join our
sales team.

- Earn **generous commissions** and residuals while enjoying your freedom to work independently.
 - Growth Company
 - **No cap on earnings**
 - Quality Leads
 - Supportive Team
 - This is a great opportunity for an individual that wants to maintain a flexible schedule and earn a great income.
- To arrange an interview, send your resume to:
admin@thetowncommon.com

Caring, Compassionate, Dignified Service when you need it most.



F. S. ROBERTS & SON
FUNERAL HOME AND
CREMATION SERVICE
A Tradition of Service. A Legacy of Trust

We Offer:

- Personalized and Traditional Funerals
- Cremations • Graveside Services
- Memorial Services

- Advance Planning Options

Jeffrey E. Megna, CFSP
Licensed Funeral Director/Embalmer (Type 3)
Owner

14 Independent St., Rowley, MA
www.fsrobertsandson.com
office@fsrobertsandson.com

978-948-7763



good earth

PURE SOY CANDLES

www.goodearthcandles.com

Natural Organic Scents



Holiday Candles

Fri & Sat 12n-5p, Sun 10a-3p
6 Ashley Rd, Rowley

THE TOBACCO SHACK ROWLEY, MA

COMFORTABLE SMOKING LOUNGE WITH WI FI

WIDE VARIETY OF NEW CIGAR PRODUCTS
PREMIUM CIGARS AND ACCESSORIES

WE ARE NOW A PROUD RETAILER OF
THE BLACK BOTTLE BEARD CO PRODUCTS

PLUS YOUR FAVORITE TEAMS ON OUR BIG SCREEN



162 NEWBURY TURNPIKE ROWLEY MA
NEXT TO AGAWAM DINER RTE 1
978 942 2417



Now's the Right Time

GENERAC PWRCELL

Take advantage of the new 30% Solar Investment Tax Credit (ITC) with PWRcell, Generac's fully-integrated solar + battery storage system. PWRcell will help you save money on your electric bill and be prepared for utility power outages. Plus it's compatible with most existing solar arrays.

SAVE 30% WITH THE SOLAR TAX CREDIT*
Call to request a free quote!
(844) 471-2366

Purchase a PWRcell and Receive a Free Ecobee Smart Thermostat Enhanced - valued at over \$189!*



*Scan the QR code for promo terms and conditions.

*Consult your tax or legal professional for information regarding eligibility requirements for tax credits.

Solar panels sold separately.



YOUNG'S
 PLUMBING • HEATING • AC

978.535.4888 • 888.567.4888

Licensed & Insured

www.YoungsPlumbing.com

Works of Local Photographer Peter Neverette at Rowley Public Library



Local artist Peter Neverette has lived in Rowley for almost eight years. A house painter by trade, he's a photographer by compulsive passion. Peter never goes anywhere without his Nikon, believing the possibility of immortalizing a moment of poignance or beauty is what makes traveling worth it, even just to the grocery store. Across the last three years Peter has amassed a tremendous library of pictures and has finally decided to take action, to test them out publicly, and try to

change his future. And what better place to begin than the Rowley Library, a mile down the road from where he lives.

All works are for sale. The display will be up through February at the Rowley Public Library, 141 Main Street in Rowley. For more information, call 978-948-2850.

If you are an artist, or have a hobby or interest you'd like to share with the community, please give us a call at 978-948-2850. The Rowley Public Library is located at 141 Main Street in Rowley.

refresh
 a digital agency

refreshstudio.com
 hello@refreshstudio.com

Increase Revenue Today!

Bring your web presence up to code with fresh designs, ads, and more.

Web Development • Web Hosting
 Social Media Marketing • Web Design
 SEM / Pay Per Click Marketing
 Search Engine Optimization (SEO)
 Logo Design • Print Design

Sports • Sports • Sports

Boys Basketball Pictures - Newburyport/Triton



Top Left - Luke O'Leary paced Triton with thirteen points.

Lower Left - Sophomore Ben Coreau scored twenty-one points to lead all scorers.

Lower Right - Griff Dupuis (Triton) and Connor Spinney (Newburyport) chase a loose ball.

Photos provided by Peter McClelland



PICTURE PERFECT, NOW

WAIT UNTIL YOU TASTE IT

Experience a steak that's hand-carved by master butchers, perfectly aged to maximize tenderness, and double-trimmed to remove imperfections. This isn't a steak - this is Omaha Steaks.

Protein-Packed Pack

- 4 Butcher's Cut Filet Mignons (5 oz.)
- 4 Boneless Pork Chops (6 oz.)
- 4 Air-Chilled Boneless Chicken Breasts (5 oz.)
- 4 PureGround™ Filet Mignon Burgers (6 oz.)
- 4 Potatoes au Gratin (2.8 oz.)
- 4 Caramel Apple Tartlets (4 oz.)
- 1 jar Omaha Steaks Seasoning (3.1 oz.)

8 FREE PureGround™ Filet Mignon Burgers (6 oz.)

72717YSP separately \$349.99
SPECIAL INTRODUCTORY PRICE \$129.99

8 BURGERS FREE

ORDER NOW! » 1.877.721.0269 Ask for 72717YSP
 OmahaSteaks.com/Protein3807

Savings shown over aggregated single item base price. Photos exemplary of product advertised. Limit 2. 8 free 6 oz. burgers will be sent to each shipping address that includes 72717. Standard S&H added per address. Offer available while supplies last. Items may be substituted due to inventory limitations. Cannot be combined with other offers. Other restrictions may apply. All purchases acknowledge acceptance of Terms of Use: OmahaSteaks.com/terms-of-use/OSI or call 1.800.228.9872 for a copy. Expires 03/31/23. | Omaha Steaks, Inc.

Health & Wellness



By J. PETER ST. CLAIR, DMD

Brighter Smiles...

BREATHING IS IMPORTANT – PART 1

back during sleep. Holding the lower jaw (mandible) forward helps to prevent the tongue from falling back in the mouth during sleep and obstructing the airway.

I was excited about this course I had taken at Tufts, and thought that I was going to start treating all these people I heard about who were not able to tolerate or didn't want to use CPAP. The problem I found was that sleep apnea needed a medical diagnosis, which meant that patients had to have already had a sleep study with a physician, have failure in the use of CPAP, and then somehow find their way to my office. I was frustrated. I wasn't treating that many patients, but knew (or at least thought), I must need more education.

So, in 2017 I enrolled in a mini-residency program at Tufts for 8 months. This was a much more intensive program with heavy emphasis on the science behind the disease. The program was great and I felt I had now "figured it out".

I was much more knowledgeable about things to look for in patients, and was referring many patients to physicians to be evaluated. Some patients would end up having a sleep study, be diagnosed with sleep apnea, go on CPAP, and then come back to my office and say, literally, "you changed my life." There is no greater feeling than that. Even though I didn't get to treat them with my fancy dental appliance, they were being treated for a disease that was slowly (or not so slowly) killing them.

There were also those patients who had the sleep study, were diagnosed with sleep apnea, were not able to (or didn't want to) use CPAP

and were referred back to me for dental appliance therapy. Great!!! However, I quickly became frustrated again. Far too many patients, with classic symptoms such as snoring and daytime fatigue, were returning to me, saying they had a sleep study that showed they did not have apnea. Now what?

I'm a dentist, not a physician. Sleep problems are medical problems. And, although I knew that many of these patients may have sleep issues that were out of my control as a dentist (there are over 100 sleep disorders), many of these patients had dental signs such as wear on their teeth, grinding and/or clenching problems, TMJ pain, and other anatomic issues that I had learned about that were likely related to breathing problems. So, what did I do? I decided I needed more education. ...continued next week

Dr. St. Clair maintains a private dental practice in Rowley dedicated to health-centered family dentistry. He has a special interest in treating snoring, sleep apnea and TMJ problems. If there are certain topics you would like to see written about or questions you have please email them to him at jpstclair@stclairdmd.com

About ten years ago I took a weekend course at Tufts University School of Dental Medicine entitled "Sleep Dentistry". This was not a course in putting patients to sleep for their dental work. This particular course was an introduction to treating people who had been diagnosed with sleep apnea (a sleep breathing disorder) by a medical doctor, and could not (or would not) use the dreaded CPAP machine.

CPAP, which stands for Continuous Positive Airway Pressure, is a facial mask which blows air through the nose to create an "air stent" to basically hold the airway open during sleep. It is the gold standard of treating sleep apnea and works well for many people, but not all.

Patients with sleep apnea have been diagnosed with a progressive disease in which breathing is decreased by a significant percentage for more than 10 seconds multiple times an hour. Most people know someone who has been diagnosed with this disease and either use a CPAP machine, or cannot use it.

The "sleep dentistry" part of the equation is that for those who have been diagnosed with sleep apnea and cannot use the CPAP machine, the next line of defense is a dental device. This is worn at night to hold the lower jaw slightly forward and not allow the jaw to fall

DR. LAURA ANNE POTVIN, P.C.
OPTOMETRISTS

**EYE CARE
FOR THE ENTIRE FAMILY!**

DR. NYLA LAMBERT
DR. SAMANTHA MEIN
DR. CATHLEEN DOUCETTE
DR. VIVIAN CHUNG
Conveniently located on Rt. 97 at
939 SALEM ST., GROVELAND
978-374-8991



J. Peter St. Clair, DMD
FAMILY & ESTHETIC DENTISTRY

Preventative,
Complete Health
Dentistry
*Better Health,
Better Life.*

978-948-2030
www.stclairdmd.com

151 Central Street • Rowley, MA 01969

Brookside Sleep Wellness
SNORING, SLEEP APNEA, TMJ

Diplomate,
American Board of
Dental Sleep Medicine
*Sleep Better,
Live Better.*

978-948-2661
www.brooksidessleepwellness.com

AMERICAN ARCHITECTURAL
GENERAL CONTRACTORS L.L.C.

Consultation to Project Completion
• Carpentry • Masonry • Landscaping • Roofing • Basements • Water Entry

• All Phases of Construction • Commercial/Residential
• All Maintenance Work • All Types of Restorations
• Free Initial Consultation • Project Management

PROPERTY MANAGEMENT/CONSTRUCTION SUPERVISION
All Types of Property Repairs

Vincent A. Iafrate, G.C. (617)835-3550

OVER 25 YEARS of "In the Field" Experience

**Come See What's New and Old!
New Vendors, Finds, & Owner**



Visit before the
March 4th-5th Grand
Opening Weekend to
find the best treasures



Theresa's Timeless Treasures

Formerly: Lost Treasures

29 Main St., Rt 1A, Rowley, MA

<http://the-antiques-cottage.square.site>

Facebook: /Therasas-Timeless-Treasures

The Town Common Newspaper
YOU LOOKED
NOW SHOULDN'T YOUR AD BE IN HERE TOO?
**To Grow Your Business in The Town Common
Call 978-432-9669 Today!**

Weekly SUDOKU

by Linda Thistle

9x9 Sudoku grid with numbers 1-9 in various positions.

Place a number in the empty boxes in such a way that each row across, each column down and each small 9-box square contains all of the numbers from one to nine.

DIFFICULTY THIS WEEK: ♦♦♦

Moderate ♦♦♦ Challenging ♦♦♦ HOO BOY!

© 2023 King Features Synd., Inc.



LIBRA (September 23 to October 22) A legal matter you hoped would finally be settled could be a pesky problem for a while until all the parties agree to stop disagreeing with each other. Be patient.

SCORPIO (October 23 to November 21) Partnerships — personal or professional — which began before the new year take on new importance. They also reveal some previously hidden risks. So, be warned.

SAGITTARIUS (November 22 to December 21) Your associates are firmly on your side, and that persistent problem causing you to delay some activities should soon be resolved to your satisfaction.

CAPRICORN (December 22 to January 19) Favorable changes continue to dominate, and you should be responding positively as they emerge. Someone wants to become more involved in what you're doing.

AQUARIUS (January 20 to February 18) A friend wants to share a secret that could answer some questions you've wondered about for a long time. Meanwhile, travel aspects continue to be strong.

PISCES (February 19 to March 20) Stay on your new course despite so-called well-meaning efforts to discourage you. Rely on your deep sense of self-awareness to guide you to do what's right for you.

BORN THIS WEEK: You have the capacity to meet challenges that others might find overwhelming and turn them into successful ventures.

© 2023 King Features Synd., Inc.

Advertisement for Jay's Painting - Interior Specialists. 35 Years Experience w/ References. Neat, Clean & Reliable! Local - Free Estimates. 978-314-0140.

Super Crossword

ALLOW TO BE ADDED

- ACROSS: 1 "Sch." for "school," e.g. 5 "My stars!" 11 Source of poi 15 Baseballer Ty 19 "Don't stop!" 20 Foray 21 State firmly 22 Voiced 23 Put on some wrist jewelry? 26 Actress Foch 27 Connect for use, to Brits 28 With 86-Across, China's place 29 Haunting 30 Mike Brady's three kids, e.g. 31 Greek fabulist 32 Pair of poetic lines about the army? 35 — Valley, San Francisco 36 Disney frame 37 FedEx rival 38 Layers 39 Healed a fictional prince of Denmark? 44 Striped feline 47 "And others," in footnotes 48 Mineo of "Dino" 49 Steer snarer 51 Re 55 Home of Taj Mahal 57 Extra wrestling garment in case the main one gets lost? 60 Heifer's home 63 "Hulk" director Lee 65 Blind as — 66 Earp of the O.K. Corral 67 Sound of wonderment 68 Bright red Kleenex? 73 Foot part 74 Cause, as havoc 76 City in Kansas 77 Time on end 78 Bison group 79 Secondhand apartment rental in Rome? 84 — gin fizz 86 See 28-Across 87 Gamma follower 88 Just so-so 90 Warship fleet 94 Test, as ore 96 Coated pill produced in Antarctica? 98 Oak nut 101 Letter before dee 103 "— got it!" 104 Partner of 67-Across 105 Parents-to-be expecting three babies at once? 111 "The — come out tomorrow" (start of an "Annie" song) 113 "Mystic Pizza" actress Taylor 114 Turkish coins 115 Out-of-date 116 How cats ask for Meow Mix, per a slogan 117 Lady friend, in France 118 Pleasing answer when actress Kate asks her agent "Who wants me next?" 121 Job detail 122 "Huh-uh!" 123 Cyclops' odd feature 124 Actress Falco 125 Car roller, to Brits 126 Secy., e.g. 127 Less wordy 128 Also — (race losers) DOWN: 1 Tone of an environment 2 Validated, as a claim 3 Period of Model T's 4 Right-hand book page 5 Pickle choice 6 Ending with ethyl 7 Many indie movies 8 Like queens 9 New Zealand native 10 Univ. URL ending 11 Gunlike stunners 12 Animator Tex 13 Saintry article 14 "— ed Euridice" (Gluck opera) 15 Nefarious group plot 16 Bobolink's kin 17 Big headline 18 Explosions 24 "The Raven" poet's inits. 25 Gather in 32 "— culpa!" 33 Boy pharaoh 34 4x4, in brief 36 Jacques of France 40 Panache 41 Use a shovel 42 Vegas lead-in 43 Wallach of "Firepower" 44 African fly 45 Suffix with organ 46 Mass of mayo, say 49 Pride parade letters 50 Jai — 52 Glide on ice 53 Teach privately 54 Decided (to) 56 Actress Ortiz 58 Of birth 59 Astonishment 60 "Fame" vocalist David 61 Major artery 62 Ostrichlike birds 64 Horrific 68 Glide on snow 69 Uncouth guy 70 Napoleon's exile isle 71 "He-e-elp!" 72 Loosen, as a shoe 75 Decorative church screen 78 Cannabis fiber 80 Paid promos 81 Tchr.'s org. 82 Comic Philips 83 Phone no. 85 "... man — mouse?" 89 Clairol products 91 "M*A*S*H" co-star 92 Request for a poker hand 93 Olympics participants 95 NBC show since '75 96 Writer's tool 97 Trailer park campers, for short 98 "Finally!" 99 Like pie crusts with pressed-in ridges 100 Greasier birds 101 Dry red wine 102 Simple 106 Kagan of the court 107 Some DVR systems 108 Sets up, informally 109 Herman's Hermits frontman Peter 110 Senior 111 Wd. of similar meaning 112 Auto racer Al 116 Funeral platform 119 Net automaton 120 Letter before zee

18x18 crossword grid with black squares and numbered starting points.

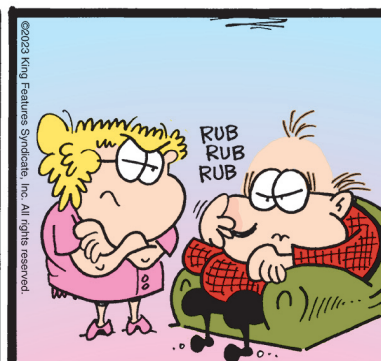
© 2023 King Features Syndicate, Inc. All rights reserved.

PUZZLE ANSWERS

Grid of puzzle answers.

9x9 grid of numbers for puzzle answers.

The Spats



by Jeff Pickering

© 2023 King Features Syndicate, Inc. All rights reserved.



CLASSIFIED ADS

HOME IMPROVEMENT AMERICAN HOME IMPROVEMENT CARPENTRY

Repairs & Additions. Interior/Exterior Painting. Fully Insured. 30 years experience. Free Estimates. Excellent Referrals. 978-465-2283

GARY'S JUST STUFF MECHANICAL ITEMS BOUGHT / SOLD & REPAIRED!

Generators, Outboards, Lawn Mowers, Snow Blowers, Tune ups, etc., pick-up and delivery available, Call Gary at (978) 376-4214

PAINTING INTERIOR, EXTERIOR

Smoke and water damage ceilings stain killed, repaired, or replaced, carpentry interior-exterior repairs, windows repaired and replaced, gutters cleaned, repaired or replaced, clean outs and clean ups of all kinds. General masonry, all brick work, chimney work, walkways, etc. (Cell) 978-376-4214, (Home) 978-374-6187

KRAKEN GAMING

BUY • SELL • TRADE



VINTAGE TOYS:
Star Wars • G.I. Joe
Transformers
MOTU • Action Figures
Godzilla • Robots
70's, 80's, 90's

VIDEO GAMES:
Nintendo • Sega
Atari • SNES • N64
GameBoy • DS • Wii
Xbox • Playstation

POKÉMON:
Buy/Sell/Trade

COMICS/RECORDS

857-272-4723

Open 11-6 daily
174 Nbpt Tpke
US Route 1, Suite 9,
Rowley, MA, 01969

Pratt Hobby Shop

COINS AND ITEMS WANTED
U.S. Coins, silver, gold,
foreign world money.
Old pocket watches,
wrist watches and costume jewelry
Wheat pennies, Pre-1958

FREE APPRAISAL
Call 978-352-2234

WANTED TO BUY
Gold Scrap, Gold Coins,
Sterling Silver
U.S. Silver Coins pre-1965
.999 Silver Bars
U.S. Silver Dollars
Wartime Nickels 1942-1945
U.S. Clad Half Dollars 1965-1969

HOBBY SUPPLIES
Remote Controlled Vehicles
ESTES Rockets & Supplies,
Plastic & Wood Models / Supplies
Autos, Trucks, Planes, Ships,
X-Acto Sets, Paints & Much More

20 E Main St, Georgetown, MA

Hours:
Closed on Monday, Private
appointments available
Tuesday-Friday 10:30-6
Saturday 10:30-5
Sunday 12-5

Phone: 978-352-2234

Caring, Compassionate, Dignified Service when you need it most.



14 Independent St., Rowley, MA
www.fsrobertsandson.com
office@fsrobertsandson.com
978-948-7763

We Offer:
• Personalized and Traditional Funerals
• Cremations
• Graveside Services
• Memorial Services
• Advance Planning Options
Jeffrey E. Megna, CFSP
Licensed Funeral Director/Embalmer (Type 3)
Owner

Sold Single Family Homes

FERRICK BROS. MOVING COMPANY
Haverhill, MA 01825

CALL FOR A FREE ESTIMATE
978-948-465-5831
www.ferrickmovers.com
Winner of the 2018 Best of the Best Moving Company
USDOT #654172 | MC # 310830 | MA. DPU # 30442

LIST_NO	STATUS	ADDRESS	TOWN	LIST	SF_TYPE	BATHS	LIST	SALE
73065049	SLD	3 Bayberry Ln	Salisbury, MA	AN6212	Detached	1	479000	491000
73066560	SLD	4 Kimberly Circle	Amesbury, MA	AN6226	Detached	2	545000	575000
73047717	SLD	35 Wethersfield Street	Rowley, MA	AN6617	Detached	2	649900	649900
73063151	SLD	378 Ipswich Rd	Boxford, MA	AN6886	Detached	4	849000	809000
73038260	SLD	Lot 7 Fieldstone Lane	Newbury, MA	AN7379	Detached	3	1199000	1175000

FRANK BERTOLINO REALTY GROUP, INC.
Residential and Commercial Real Estate
978-255-4735
91 Bridge Rd Salisbury MA
"It's not about us - It's all about you"

Help Wanted

Industrial Maintenance Position Steel Fabrication Plant, Rowley, MA

Capone Iron Corporation is located in Rowley, MA is in search of an experienced Industrial Maintenance person for our steel fabrication shop.

The primary responsibilities for this position are as follows:

- Perform a variety of activities related to repair and maintenance of physical plant including but not limited to electrical, plumbing, carpentry, painting, hydraulics and pneumatics
- Perform preventive/predictive maintenance to fabrication machinery per requirements
- Analyze and solve electrical and mechanical problems
- Assist with snow removal, plowing, sanding, shoveling, etc.

Requirements:

- Technical institution diploma or equivalent training
- Minimum 3 years experience is preferred in the maintenance of industrial machine repairs, and specifically fabrication equipment, overhead cranes, etc.
- Scissor Lift, Boom Lift, Forklift, Hydraulics certifications a plus
- Ability to read, comprehend and work from technical documents, blueprints and electrical schematics
- Valid driver's license, CDL a plus
- Must have reliable transportation
- Must be eligible to work in the U.S. without sponsorship



Capone Iron Corporation offers competitive pay, a safe work environment, uniforms with weekly cleaning service, paid holidays, PTO, healthcare, dental and vision coverages, and 401K Retirement Savings. Interested candidates may come to 20 Turcotte Memorial Drive, Rowley Massachusetts to fill out an application. Alternatively, they may email inquiries to careers@caponeiron.com

Help Wanted

Capone Iron Corporation is a structural steel fabricator located in Rowley, MA We are hiring for the following positions. Please visit our website for more detailed information at www.caponeiron.com

Structural Steel and/or Miscellaneous Metals Welder/Fitter

- Layout steel/misc metals assembly per shop drawings
- Able to read and interpret fabrication drawings
- Working knowledge of welding machine operation
- Able to consistently produce quality welds including SMAW, FCAW, GMAW, STUD

CNC Machine Operator

- 1-3 years experience operating industrial CNC machines
- Familiar with steel shapes
- Able to operate overhead cranes
- Able to read and interpret fabrication drawings

Shipping Loader/Industrial Painter

- Experienced in fixed mast forklift and yard horse for loading and movement of flatbed trailers
- Knowledge of equipment weight hoisting limitations
- Preparing various steel parts for painting (cleaning, grinding, etc.)
- Able to prepare/mix paint and solvents per manufacturer/job specifications
- Able to safely operate airless spray units and a variety of power tools

The following is required in order to be considered for any of these positions:

- Able to use overhead crane system
- Familiarity with various steel shapes is a plus
- Comfortable with using technology in a paperless environment
- Good communication skills, including the ability to read and speak English fluently
- Must have reliable transportation to work
- Able to work in the U.S. without sponsorship



Capone Iron Corporation offers competitive pay, a safe work environment, uniforms with weekly cleaning service, paid holidays, PTO, healthcare, dental and vision coverages, and 401K Retirement Savings. Interested candidates may come to 20 Turcotte Memorial Drive, Rowley Massachusetts to fill out an application. Alternatively, they may email inquiries to careers@caponeiron.com

Classified Form
Use this form to submit your classified entry

SPECIAL OFFER: 20 Words for 4 Weeks - \$30.00 *SAVE \$10.00!
Prepaid Consecutive Ads, 75¢ for each additional word.
Circle A Category

For Sale • Wanted • Services • Free • Child Care Needed/Avail. • Rental
Auto • Boat • Help Wanted • Animals • Yard Sale • Rental • Other _____

Payment
Classified Ads must be paid for prior to publication. No billing options exist for classifieds. Cash, Checks, or Credit Cards Accepted. Checks made payable to: The Town Common. **DEADLINE: Wed. at 5PM for the following week.**

Cost per issue: \$10.00 per issue / 20 words or less. (25 cents for each additional word.) or
SPECIAL \$30 FOR 4 WEEKS

1	2	3	4
5	6	7	8
9	10	11	12
13	14	15	16
17	18	19	20

25 cents for each additional word.

21	22	23	24
----	----	----	----

Name: _____ Address: _____
Town: _____ State: _____ Zip: _____
Tel. #: _____ Email: _____

Number of Issues or Dates: _____
Credit Card Type: ___MC ___Visa ___Amex ___Dscr
Credit Card # _____ Expiration Date ___/___/___

Mail To: The Town Common, 77 Wethersfield St., Rowley, MA 01969
or e-mail to: advertise@thetowncommon.com

